

Lineup

Multi Etchant

Controlled medical device; Dental etching material (Adhesive material for dental ceramics)

◆ Multi-use Etchant for Various Types of Materials and Tooth

Single Package Multi Etchant (2 mL) Accessory Needle tip: 10 pcs.
Needle tip: 5 pcs.

Function table depending on materials and tooth

E: Etching C: Cleaning P: Priming

Zirconia	Glass-Ceramics	Precious Metals- Non-precious Metals	Resin* CAD/CAM crown, Hybrid-Resin, Hard Resin, Composite Resin etc	Tooth Substance	
				Enamel	Dentine
CP	C	C	C	EC	EC

*Contains inorganic fillers



Related Products

KZR-CAD Zr

Zirconia Disc

Controlled medical device; Ceramics for dental cutting processing

◆ Excellent aesthetics

Aesthetic zirconia



KZR-CAD NANOZR

Nano-Zirconia Disc

Controlled medical device; Ceramics for dental cutting processing

◆ Excellent fracture toughness

Technical zirconia



iGOS-BOND

Dental Adhesive for Enamel and Dentine

◆ High Adhesion and Adhesive Properties Minimally Affected by Intraoral Conditions



Set Package iGOS-BOND (5 ml): 1 bottle
· Disposable Applicator Brush: 50 pcs.
· Disposable Plate: 25 pcs.



Single Package iGOS-BOND (5 ml)

Set Package iGOS-BOND (5 ml): 2 bottles

Accessory Disposable Applicator Brush: 50 pcs.
Disposable Plate: 50 pcs.

iGOS

Resin-based Dental Restorative Material

◆ Achieving both fluoride sustained release and high strength



Single Package iGOS Universal 4g (2 ml)



Single Package iGOS Flow 2.6g (1.5 ml)
Accessory: Needle Tip 10 pcs.



Single Package iGOS Low Flow 2.6g (1.5 ml)
Accessory: Needle Tip 10 pcs.

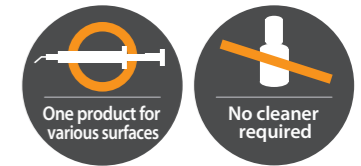
Accessory
Needle Tip: 20 pcs.

The actual color of the product, model and package may differ from the photographs due to printing ink and shooting conditions.

For various types of surfaces including
Metals, Resin, Ceramics, Enamel and Dentine

Etching & Cleaning Multi Etchant

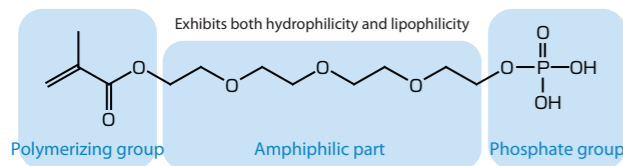
Developed by YAMAKIN
Adhesive phosphate monomer makes multi-use possible!!



Controlled medical device; Dental etching material (Adhesive material for dental ceramics)

Multi-use etchant

For various types of materials and tooth



M-TEG-P

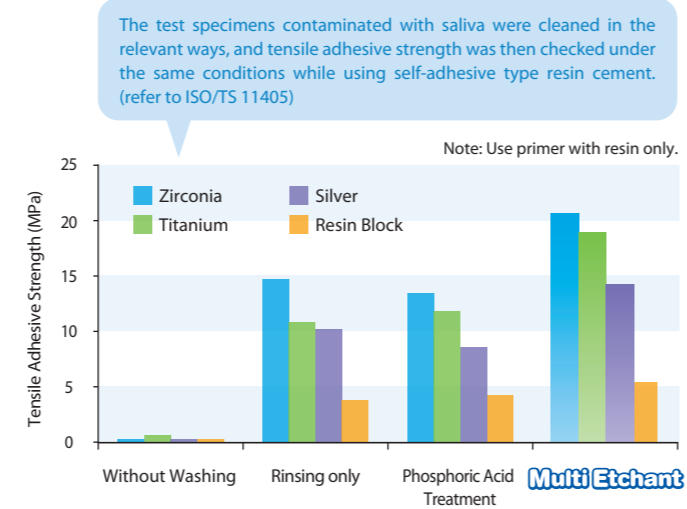
If the adherend surface for orthoprosthesis is contaminated, it is cleaned with water or phosphoric acid etching in order to secure adhesive strength. However, it may not be sufficient or may cause a decline in adhesive strength depending on the material.

"Multi Etchant" does not contain phosphoric acid. Rather, it contains adhesive phosphate monomer (11- Methacryloyl oxytetra ethylene glycol dihydrogen phosphate, M-TEG-P), developed byYAMAKIN. This means that "Multi Etchant" can clean various types of materials such as ceramics, metal, and resin.

Multi Etchant is a mild etching material which can be used with both enamel and dentine. Furthermore, it also has the property of binding strongly to zirconia, which generates priming effect.

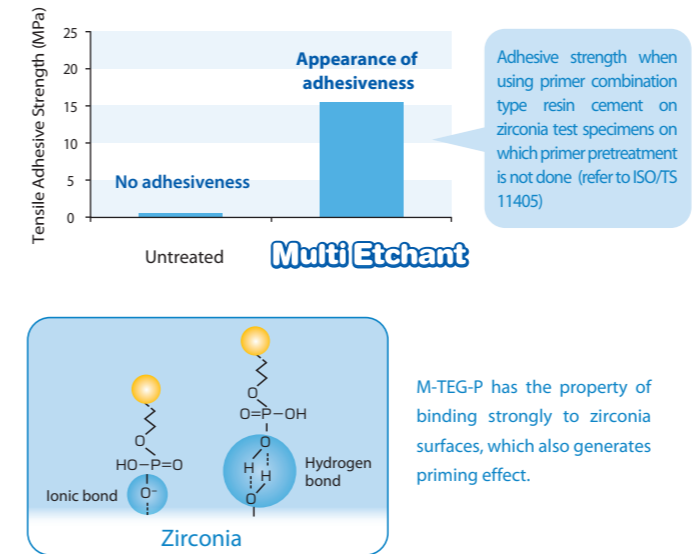
Feature 1 Multi-cleaning for orthoprosthesis

Inhibiting factors such as saliva are removed by applying "Multi Etchant," and then rinsing and drying, which brings out the true performance of the adhesive material.



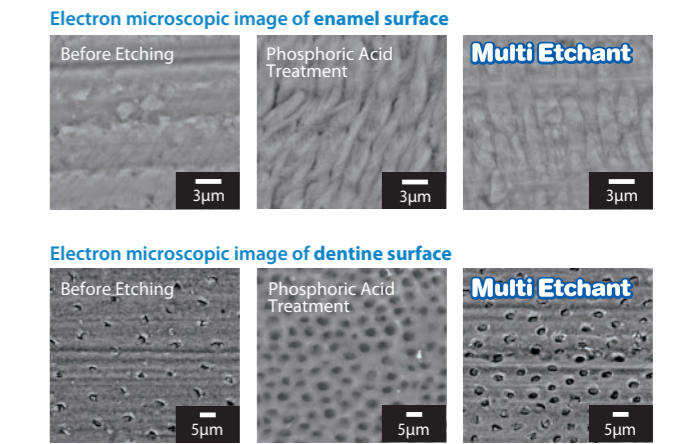
Feature 2 Simultaneous cleaning and priming effect on zirconia

This product exhibits both a priming effect as well as a cleaning effect for zirconia treatment.



Feature 3 Mild etching for both enamel and dentine

Etching can be done by applying Multi Etchant to tooth substance. It gives enamel surface roughness and removes cutting waste (smear layer and smear plug) from dentine, which assists the adhesion of bonding materials. The mildness of this product prevents dentine from over-decalcification.



Operation Procedure

Please read the instructions for use for this product and the related materials before use.

Cleaning of restoration*1 surface

- Rinse the adherend surface thoroughly and dry.
 - Squeeze this product onto the adherend surface.
 - Rub lightly with a micro-brush for 20 sec. or more while applying.
 - Leave it for 10 sec. or more.
 - Rinse thoroughly with water until the color of this product has disappeared.
 - Dry with oil-free air.
 - Apply adhesive material*2. Then, adhere abutment tooth etc. in accordance with normal practice.
- The same cleaning procedure can be applied for metal core, abutment tooth and repairing of falling crown.

Tooth substance*3 Etching

- Thoroughly wash the part to be etched, and dry it.
- Apply Multi Etchant to adherend surface on which bonding material will be applied. If necessary, use the applicator.
- Leave it for 20 sec.* or more. *For dentine, it is advisable to leave the product for 30 sec. or more.
- Rinse thoroughly with water until the color of this product has disappeared.
- Dry with oil-free air.
- Apply adhesive material*2. Then, fill up the area with composite resin or adhere inlay as usual.



*1 Applicable for zirconia, glass-ceramics, resin which contains inorganic fillers (CAD/CAM crown, hybrid-resin, hard resin, composite resin etc.), and metal (precious metal, non-precious metal). The product exhibits priming effect on zirconia. *2 Please use appropriate adhesive material (primer, cement, bonding etc.) depending on the materials and the case being treated. *3 Applicable for both enamel and dentine.