

Please read through this manual
before using the product.



Controlled Medical Devices
Light Cure Composite Resin for Crows and Bridges
Certification Number : 218AABZX00035000

Instructions Manual

Yamamoto Precious Metal Co., Ltd.

Table of Contents

- 2 Contraindications and Prohibitions
- 2 Shapes, Composition and Principles
- 2 N.B.: Technical Directions and Points for Attention
- 3 Precautions
 - 1. Precautions
 - 2. Important Basic Cautions
 - 3. Other Cautions
- 3 Handling, Storage and Expiry Date
 - 1. Handling and Storage
 - 2. Expiry Date
- 4 Intended use and effect / efficacy
- 4 Characteristics
 - 1. Safety
 - 2. Properties
 - 3. Handling
 - 4. Colors
- 5-6 Luna-Wing Shade Color Table
- 7 Luna-Wing Compositions
 - 1. Primer Paste
 - 2. Opaque Resin
 - 3. Body Resin
 - 4. Stain
 - 5. Repair Liquid
- 7-8 Instructions for Use
 - 1. Primer Paste
 - 2.1 Invisible Opaque
 - 2.2 Opaque
 - 2.3 Special Opaque Color
 - 3.1 Opaque Dentine
 - 3.2 Cervical
 - 3.3 Dentine
 - 3.4 Enamel
 - 3.5 Trans Enamel
 - 3.6 Translucent
 - 3.7 Effect
 - 3.8 Base
 - 4. Stain
 - 5. Repair Liquid
- 9 Light Curing Schedule
- 9 Basic Layering Technique
- 10 Luna-Wing Basic Layering Step
- 11-21 Basic Layering Technique
 - Basic Build-Up Layering for Facing Crown
 - Basic Build-Up Layering for Crown Bridge
 - Basic Build-Up Layering for Jacket Crown
- 22 Line Up

Controlled Medical Devices
Light Cure Composite Resin for Crowns and Bridges

Luna-Wing



Luna-Wing strikes a good balance between excellent properties and easy handling, with filler developed by nanotechnology. Biological safety tests based on global standard ISO 10993 "Biological evaluation of medical devices" have been conducted on Luna-Wing. Also, our company's original biogenetic evaluation tests on cell, tissue have also revealed further details of the effect Luna-Wing in the mouth.



[Contraindications and Prohibitions]

Do not use this product on patients who have a history of allergy (such as irritation) to this product or methacryl monomer.



[Shapes, Composition and Principles]

This product consists of the following items and contains ingredients below.

Item	State	Ingredients
Opaque Resin	Paste	metacrylate monomer, inorganic fillers, pigments, etc.
Body Resin	Paste	metacrylate monomer, organic fillers, inorganic fillers, pigments, etc.
Stain	Paste/Liquid	metacrylate monomer, inorganic fillers, pigments, etc.
Repair Liquid	Liquid	metacrylate monomer, etc.
Primer Paste	Paste	Silane Coupling Agent, etc.

Principles: This material is a light-cure type, cured by visible light.



[N.B.: Technical Directions and Points for Attention]

1. For light-curing this product, use a halogen lamp, xenon lamp, metal halide lamp or LED with an effective wavelength of 400-500 nano-meters.
In cases where other medical curing equipment is to be used, or if you have any questions about curing machines, please feel free to contact us.
2. As fractures may happen, this product cannot be used for molars.
3. In cases where this product is used for anterior tooth and facing crown, the occlusal area of the opposing tooth must be metal-coated to avoid fracture.
4. Close the cap promptly and tightly after using this product.
5. Use separate brushes for primer paste, opaque, stain, and repair liquid.
6. When in use on a pallet or mixing paper, this product should be covered by a shade cover.
7. Do not mix body resin with other materials, and do not mix more than one type of body resin to prevent air bubble entrapping and deterioration in quality of material properties.
8. Stain must be applied on internal layer; please use Enamel or other products after Stain application.
9. Avoid exposures to strong light or sunlight (near windows or laboratory lights, etc.) in order to prevent hardening of paste.
10. Do not use base on facing part, as base is designed only for the pontic area.



[Precautions]

1. Precautions

- ① Provide adequate ventilation (several times per hour).
- ② When cutting and polishing cured product, use exhaust fan and anti-dust mask as approved by your local public safety agency in order to avoid inhaling dust. Wear safety goggles to protect the eyes.
- ③ Do not use this product outside the scope of recommended indications, effects or potency.
- ④ Do not use this product in combination with other products.
- ⑤ Only adequately certified personnel should handle this product.
- ⑥ Do not loosen or screw the syringe at low temperature as it may break. Please use this product at an ambient temperature of around 20°C. For example, in cases where the product has been stored at 4°C, leave it at a room temperature of around 20°C for more than 20 min. in order to prepare product for use. 20°C-25°C is the optimal temperature for easy handling.

2. Important Basic Cautions

- ① Stop using this product immediately if any signs of allergy, such as irritation or rash, appears in patients. If symptoms persist, seek medical advice.
- ② Operators must discontinue use if any signs of irritation or rash appear. If symptoms persist, seek medical attention.
- ③ Do not handle non-cured material of this product with bare hands. Wear plastic gloves and safety goggles to protect from irritation. Avoid direct skin and eye contact. In case of skin contact, wipe with alcohol cotton swabs, and flush with plenty of running water. In case of eye contact, immediately flush with plenty of running water, and consult a physician.

3. Other Cautions

Crown restoration area may be stained and plaque-adherent depending on patients' dietary habits. Advise daily oral cleaning.



[Handling, Storage and Expiry Date]

1. Handling and Storage

- ① This product must be stored in out of contact with direct light sources at a temperature of 4-25°C.
- ② Do not store too many products in the same storage area.
- ③ Storage and working areas must be equipped with fire extinguisher.
- ④ Keep out of reach of personnel other than dental staff.

2. Expiry Date

- ① This product must be used before the expiry date printed on the package.
- ② The expiry date printed on the package is based on our authentication.
- ③ The expiry date printed on the package refers to use the expiry date.

*(ex.; YYYY-MM means the last day of YYYY 'year' / MM 'month' as the expiry date)

[Intended use and effect / efficacy]

This product is a light-cure type composite resin for dental crown restoration and temporary crowns, such as facing crowns, jacket crowns, and bridges. Do not use this product for other purposes.

[Product Specification]

This product is a light-cure type composite resin for dental crowns and bridges classified as ISO 10477, Dentistry-polymer-based crown and bridge materials that contain a light or UV-sensitive initiator; Type 2, Class 2

	Body Resin (Standard)	Hard Type*
Hardness (HV)	59	59
Flexural Strength (MPa)	116	105
Water Sorption ($\mu\text{g}/\text{mm}^3$)	29	28
Solubility ($\mu\text{g}/\text{mm}^3$)	1.0	0.9

* We have lineup of hard type of Enamel, Trans Enamel and Translucent, and their viscosity is same as Dentine.

[Characteristics]

1. Safety

This product conforms to ISO 10993-1 and biocompatibility has been confirmed through evaluation testing. This product has also passed our own biological safety tests based on biogenetic, cell and tissue evaluation.

2. Properties

Fillers' particle size is well-adjusted, and fillers are formulated with high density and good balance. Properties such as bending strength, hardness and abrasion resistance are improved by strengthening the bonding between matrix and fillers. Fillers' high filling rate works to decrease cure shrinkage, prevents cracks and improves fitting accuracy. In the mouth, the degree of abrasion by brushing is decreased and luster is long-lasting.

3. Handling

The Opaque resin line-up includes highly flowable Invisible Opaque, which flows into the undercut of retention beads evenly. With Opaque, light curing is secured with a deep light cure depth.

Luna-Wing Body resin paste is such an easy molding material that it maintains its form without dripping off during the forming process. Enamel, Trans Enamel, Translucent, Effect and Base prevent air bubble formation by having a viscosity 30% lower than Cervical, Opaque Dentine and Dentine.

Also, we have lineup of hard type of Enamel, Trans Enamel and Translucent, and their consistency (viscosity) is same as Dentine.

4. Colors

Luna-Wing reproduces the colors of general-use shade guides. For frequently used A2, A3, and A3.5 shades, Red Plus Shade is available to increase redness in the mouth. Red Plus Shade reproduces the typical redness and brightness of Japanese teeth. In cases where sufficient thickness is not secured, apply Opaque Dentine thinly to reproduce color easily. The Opaque Dentine shade lineup is available in the A series only. There are a variety of characterizing colors, such as Effect and Stain, which work effectively to make partial accents. Furthermore, Luna-Wing has fluorescence similar to natural teeth for even more beautiful restoration.

[Luna-Wing Shade Color Table]

■ Basic Shades

	A0	A1	A2	A3	A3.5	A4
Invisible Opaque	[Dark Gray Swatch]					
Opaque	OA0	OA1	OA2	OA3	OA3.5	OA4
Cervical	CA1			CA2		
Opaque Dentine	ODA0	ODA1	ODA2	ODA3	ODA3.5	ODA4
Dentine	DA0	DA1	DA2	DA3	DA3.5	DA4
Enamel	E0	E2	E3	E4		

B1	B2	B3	B4	C1	C2	C3	C4	D2	D3	D4
IvO										
OB1	OB2	OB3	OB4	OC1	OC2	OC3	OC4	OD2	OD3	OD4
CB1		CB2		CC1		CC2		CD1		CD2
DB1	DB2	DB3	DB4	DC1	DC2	DC3	DC4	DD2	DD3	DD4
E1	E2	E3	E2	E3	E4	E2	E3			

■ Red Plus Shade

Opaque		OA2 R	OA3 R	OA3.5 R	
Cervical		CA1 R		CA2 R	
Dentine		DA2 R	DA3 R	DA3.5 R	

■ Effect

HV WE	WE	AM	OC	Coffee	Orange	L GUM	GUM	D GUM
-------	----	----	----	--------	--------	-------	-----	-------

■ Special Opaque Color

InO1	InO2	PO	MO
------	------	----	----

■ Stain

White	Milky	Pink	Salmon	White Violet	Violet	Orange	Dark Orange	Red
Whit	Mky	Pnk	S Pnk	W Vlt	Vlt	Org	Dk Org	Red
Yellow	Blue	Brown	Reb Brown	Dark Brown	A Shift	B Shift	C Shift	D Shift
Yel	Blu	Brn	R Brn	Dk Brn	A Sft	B Sft	C Sft	D Sft
Gray	Black	Clear						
Gry	Blk	Clear						

■ Trans Enamel

TE

■ Base

Base

■ Translucent

HVT	T	LVT	CT
-----	---	-----	----

*We also have Lineup of hard type of Enamel, Trans Enamel and Translucent.
 Enamel : E0 Hard, E1 Hard, E2 Hard, E3 Hard, E4 Hard
 Trans Enamel : TE Hard
 Translucent : HVT Hard, T Hard, LVT Hard, CT Hard

[Luna-Wing Composition]

1. Primer Paste

Primer Paste is a bonding primer for non-precious alloys. It cannot be used on gold alloys.

2. Opaque Resin

Light-cure type paste containing methacryl monomer intended to conceal metal color. Apply Invisible Opaque first to seal undercut retention beads, and then light cure. Then, apply each opaque and light cure.

3. Body Resin

Light-cure type paste containing methacryl monomer. Body resin is a generic term for Opaque Dentine, Cervical, Dentine, Enamel, Trans Enamel, Translucent, and Effect.

* Base has deep cure depth, and was developed exclusively for pontic cutback with improved hardness. It cannot be used on front, as other types of body resin can.

4. Stain

Light-cure type paste containing methacryl monomer for color adjustment. 'Clear' is a diluent liquid for Stain, and also is applicable to emphasize translucency.

5. Repair Liquid

Light-cure type liquid containing methacryl monomer. For additional build-up after shape adjustment, apply Repair Liquid thinly then apply body resin. It improves adaptability of hardened surface.

[Instructions for Use]

1. Primer Paste

Apply before Invisible Opaque for surface treatment. Primer paste has strong bonding to non-precious alloys. It can be used as Invisible Opaque, so the use of Invisible Opaque is not necessary. In this case, Primer Paste should be applied thickly enough to cover retention beads.

※Primer Paste can not be used for gold alloys.

2.1 Invisible Opaque

Invisible Opaque is a flowable opaque resin that flows into the undercut of retention beads to enhance mechanical retention between metal and resin.

2.2 Opaque

Opaque is used to cover metal color.

2.3 Special Opaque Color

This Opaque is used for natural color expression. Use on incisal or cervical area when reflection of Opaque color is strong.

InO1 InO2	Incisal Opaque	InO1 (gray), InO2 (gray, purple); Basic color to give artificial translucency to connector of connected teeth and anterior incisal edge (when there is metal close to incisal edge).
PO	Pink Opaque	Basic color for gum color resin.
MO	Margin Opaque	Orange and beige color to emphasize cervical color.

3.1 Opaque Dentine

Opaque Dentine is used to prevent percolation of opaque color (when there is an extremely thin space for build-up)(when sufficient thickness for Dentine is not secured). When build-up thickness is less than 0.5mm, apply it thinly to express color depth with a thin layer.

3.2 Cervical

Body resin for natural color expression around cervical area.

3.3 Dentine

Body resin to express dentine.

3.4 Enamel

Body resin to express enamel.

3.5 Trans Enamel

Body resin to express translucency.

It's used to express translucency is between Translucent and Enamel.

3.6 Translucent

Body resin to express translucency.

HVT	High Value Translucent	Translucent with high brightness.
T	Translucent	Standard translucent.
LTV	Low Value Translucent	Translucent with low brightness.
CT	Cervical Translucent	Light orange and pink translucent for gum color. For cervical area expression.

3.7 Effect

Characterizing body resin to express discolored tooth, etc.

HVWE	High Value White Enamel	Enamel brighter than WE.
WE	White Enamel	Enamel with High brightness. Expresses proximal surface and white bands.
AM	Amber	Expresses orange clearness.
OC	Occlusal	Light orange color. Expresses color of posterior occlusal surface.
Coffee	Coffee	Emphasizes brown colors such as coffee.
Orange	Orange	Emphasizes orange color.
L GUM	Light Gum	Expresses light gum color.
GUM	Gum	Normal gum color to express gum.
D GUM	Dark Gum	Dark gum color to express gum.

3.8 Base

Base is used to fill pontic part of bridges.

Base is translucent color with deep light-cure depth, designed only for pontic part.

It cannot be used on facing part.

4. Stain

Characterizing item to express discolored tooth. Additional color tone is expressed effectively by thin layer. After light curing of opaque or body resin, apply with a round brush and light cure for about 60 sec.

Stain should be used as an internal color expression. After applying stain, light cure for about 60 sec.; it is necessary to apply body resin afterward.

※ Stain cannot be used for surface.

All "shift" stains are basically brown colors adjusted to general shades from A to D.

There are 4 kinds of shift: A shift (red and brown), B shift (red and yellow), C shift (gray), and D shift (red and gray).

Clear is dilute liquid to adjust viscosity of Stain. Clear can be used to emphasize translucency.

5. Repair Liquid

Repair Liquid is used when non-cured surface is removed after correction of shape.

It improves the adaptation of cured surface before additional application.

[Light Curing Schedule]

Curing procedure is as given in the table.

Final Light Cure : light cure after finishing the build-up completely.

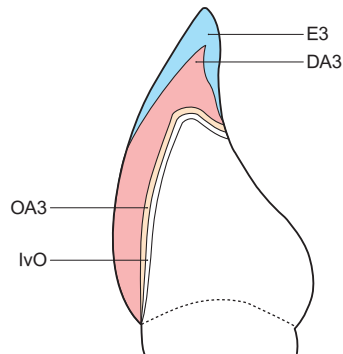
*Body Resin

Cervical, Opaque
Dentine,
Dentine, Enamel,
Translucent Enamel
Translucent, Effect,
Base

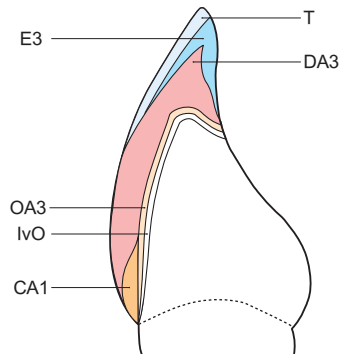
Name	Conventional Curing Time (Seconds)	Yamakin LED CURE Master
Primer Paste	About 90 sec.	About 10 sec.
Invisible Opaque	About 90 sec.	About 10 sec.
Opaque	About 180 sec.	About 30 sec.
Body Resin*	Base	About 180 sec.
	Others	About 60 sec.
Stain	About 60 sec.	About 10 sec.
Final Light Cure	About 180 sec.	About 90 sec.

[Basic Layering Technique]

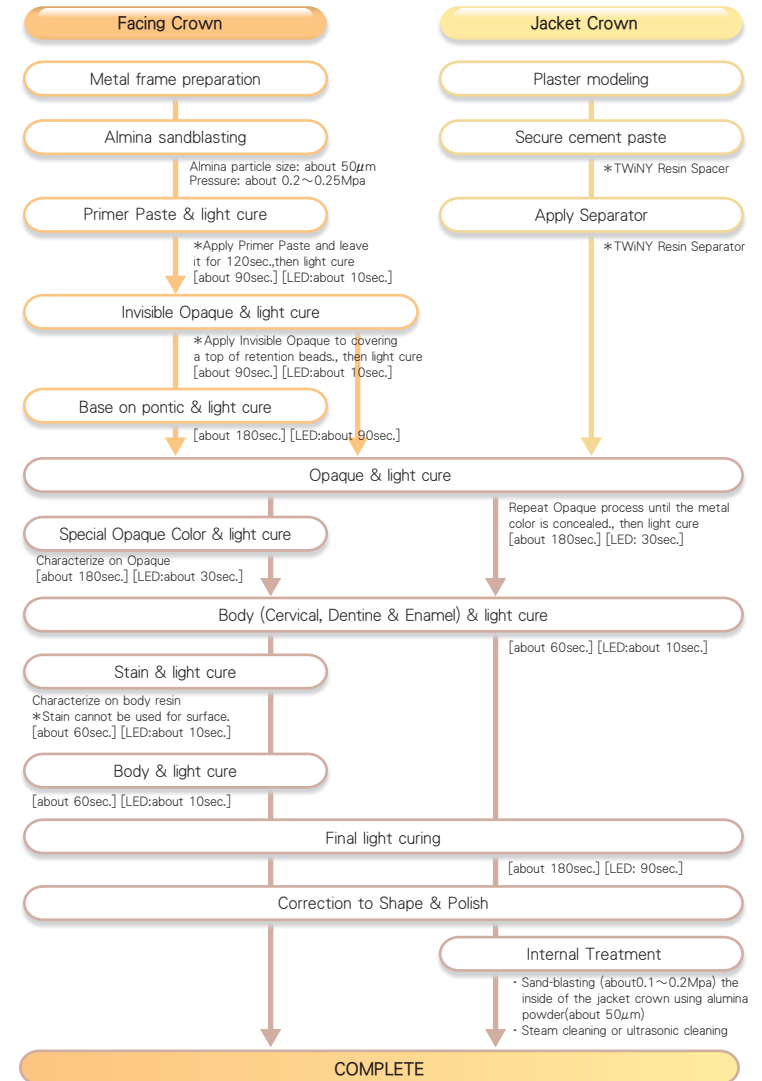
2-layer build-up



Multi-layer build-up



[Luna Wing Basic Layering Step]



[Basic Build-Up Layering for Facing Crown]

*Conventional curing time is indicated in the following steps.

In case, the LED CURE Master is used, please confirm "Light Curing Schedule" on page 9.

1. Metal Frame Preparation

Make a plaster model in accordance with normal practice. Make the crown shape using wax, and make space between crowns; then apply bonding material and retention beads on facing part to make wax pattern (mould of metal frame). Use 100 μ m-200 μ m particle size retention beads.

Then cast the metal following product instruction.



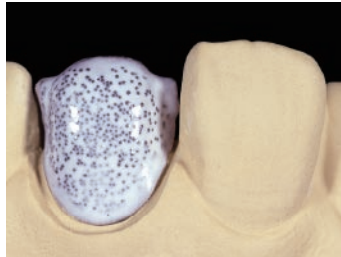
2. Alumina Treatment of Metal Frame

Sand-blast (about 0.2~0.25Mpa) the surface with alumina powder (about 50 μ m); then use steam cleaner or ultrasonic cleaner to wash, then dry.

3. Primer Paste and Invisible Opaque Application and Light Curing

Apply Primer Paste evenly with a flat brush. Leave it for 120 sec., to enhance bonding strength. Light cure for about 90sec. Then apply Invisible Opaque to cover retention beads. Apply thinly in margin area with no beads. Light cure about 90 sec. again. Primer Paste is a bonding material, but at the same time it can be used as Invisible Opaque, the use of Invisible Opaque is not necessary. In this case, Primer Paste should be applied thickly enough to cover retention beads.

*Primer Paste can not be used for gold alloys.



4. Opaque Application and Light Curing

Apply opaque with a flat brush thinly and light cure for about 180 sec. In cases where the metal color is visible, repeat this step until the metal color is concealed.

*Do not apply thickly at one time.

Use Special Opaque Color to express transparency of the incisal area or color of the neck.



5. Cervical (Opaque Dentine) Application and Light Curing

Apply Cervical or Opaque Dentine starting from the neck to the incisal area, applying progressively thinner, taking subsequent color gradation into consideration. Light cure for about 60 sec.



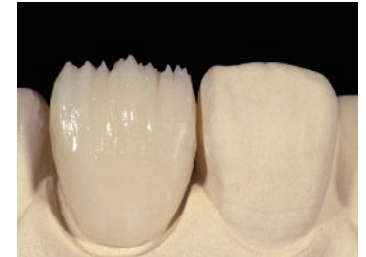
6. Dentine Application and Light Curing

Apply Dentine to form the required dentine core shape and light cure for about 60 sec.

(Apply desired color of Stain with round brush if necessary to adjust color tone and for partial characterization. Then light cure for about 60 sec.)

*When non-cured surface is removed after correction of shape, use Repair Liquid.

It improves the adaptation of cured surface before additional application



7. Enamel Application and Light Curing

Apply Enamel to form the required crown shape and light cure for about 60 sec.



[Basic Build-Up Layering for Facing Crown]

*Conventional curing time is indicated in the following steps.

In case, the LED CURE Master is used, please confirm "Light Curing Schedule" on page 9.

8. Translucent Application and Light Curing

In cases where Translucent is required, apply Translucent and light cure for about 60 sec.



9. Final Light Curing

After final layering, light Cure for about 180 sec as a final light curing.

10. Correction to Shape

Correct the shape using a carborundum or diamond point.

*Additional Layering

In case of additional layering after corrections to shape, apply Repair Liquid thinly and apply needed body resin. Light cure for 60 sec., the same steps as 5-9.



11. Finishing

Remove any scars with paper cone and silicon point to make the surface smooth.



12. Polishing

Polish by using brush, fabric buff, with C&B Diamond polisher or C&B Nano Diamond Polisher.



13. Complete



[Basic Build-Up Layering for Crown Bridge]

*Conventional curing time is indicated in the following steps.

In case, the LED CURE Master is used, please confirm "Light Curing Schedule" on page 9.

Metal Frame Preparation

1. Cut Back

Cut back forming crown. In cases where Luna-Wing is used for anterior tooth or facing crown, the occlusal area of the opposing tooth must be metal-coated to avoid fracture.



2. Apply Retention Beads

Apply bonding material and retention beads on facing part to make wax pattern.

Use 100 μ m -200 μ m particle size retention beads. Then cast the metal following product instructions.



Basic Build-Up Layering for Crown Bridge

1. Surface Treatment of Metal Frame

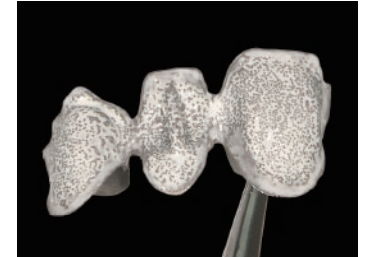
Sand-blast (about 0.2~0.25Mpa) the surface using alumina powder (about 50 μ m), then use steam cleaner or ultrasonic cleaner to wash and dry.



2. Primer Paste and Invisible Opaque Application and Light Curing

Apply Primer Paste evenly with a slim round brush. Leave it for 120 sec., to enhance bonding strength. Light cure for about 90sec. Then apply Invisible Opaque to cover retention beads. Apply thinly in margin area with no beads. Light cure about 90 sec. again. Primer paste is a bonding material, but at the same time it can be used as Invisible Opaque, the use of Invisible Opaque is not necessary. In this case, Primer Paste should be applied thickly enough to cover retention beads.

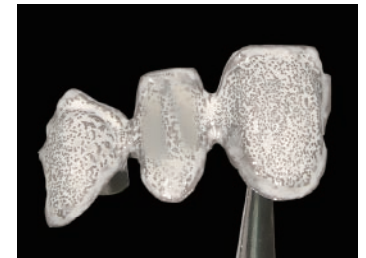
*Primer Paste can not be used for gold alloys.



3. Base Application and Light Curing

For pontic part, apply Primer Paste with a flat brush to pontic area and light cure for about 90 sec. then apply base.

Adjust facing adjacent thickness, and light cure for about 180 sec.



4. Opaque Application and Light Curing

Apply opaque with a flat brush thinly and light cure for about 180 sec. In cases where the metal color is visible, repeat this step until the metal color is concealed.

*Do not apply thickly at one time.

Use Special Opaque Color to express transparency of the incisal area or color of the neck.



[Basic Build-Up Layering for Crown Bridge]

*Conventional curing time is indicated in the following steps.

In case, the LED CURE Master is used, please confirm "Light Curing Schedule" on page 9.

5. Cervical (Opaque Dentine) Application and Light Curing

Apply Cervical or Opaque Dentine starting from the neck to the incisal area, applying progressively thinner, taking subsequent color gradation into consideration. Light cure for about 60 sec.



6. Dentine Application and Light Curing

Apply Dentine to form the required dentine core shape and light cure for about 60 sec.

(If partial characterization of color adjustment is necessary, apply desired color of Stain with round brush and light cure for about 60 sec.)



7. Enamel Application and Light Curing

Apply Enamel to form the required crown shape and light cure for about 60 sec.



8. Translucent Application and Light Curing

In cases where Translucent is required, apply Translucent and light cure for about 60 sec.

For the intermediate color expression between Translucent and Enamel, apply Translucent Enamel. For discoloring expressions, apply Effect partially.

9. Final Light Curing

After final layering, light cure for about 180 sec. as a final light curing.

10. Corrections to Shape

Correct the shape using a carborundum or diamond point.

*Additional Layering

In the case of additional layering after corrections to shape, apply Repair Liquid thinly and apply needed body resin. Light cure for 60 sec., the same steps as 5-10.



11. Finishing

Remove any scars with paper cone and silicon point to make the surface smooth.



12. Polishing

Polish by using brush, fabric buff, and polishing material to finish.



13. Complete



[Basic Build-Up Layering for Jacket Crown]

*Conventional curing time is indicated in the following steps.

In case, the LED CURE Master is used, please confirm "Light Curing Schedule" on page 9.

Making Plaster Model

1. Resin Spacer Application

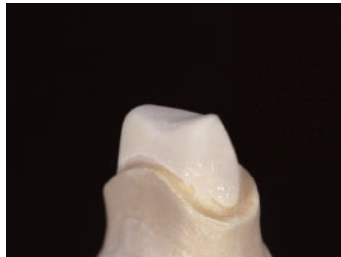
Make a plaster model in accordance with normal practice.

Apply TWiNY Resin Spacer on surface, except margin area and dry.



2. Resin Separator Application

For easier removal of jacket crown mould, apply TWiNY Resin Separator thinly on margin area and dry. Apply Opaque before TWiNY Resin Separator gets completely dry.



3. Opaque Application and Light Curing

Apply Opaque with a flat bush thinly and light cure for about 180 sec. In cases where the metal color is visible, repeat this step until the metal color is concealed.

*Do not apply thickly at one time.

Use Special Opaque Color to express transparency of the incisal area or color of the neck.



4. Cervical (Opaque Dentine) Application and Light Curing

Apply Cervical or Opaque Dentine starting from the neck to the incisal area, applying progressively thinner, taking subsequent color gradation into consideration. Light cure for about 60 sec.



5. Dentine Application and Light Curing

Apply Dentine to form the required dentine core shape and light cure for about 60 sec.

(If partial characterization of color adjustment is necessary, apply desired color of Stain with round brush and light cure for about 60 sec.)



6. Enamel Application and Light Curing

Apply Enamel to form contour and light cure for about 60 sec.

7. Translucent Application and Light Curing

In cases where Translucent is required, apply Translucent and light cure for about 60 sec.

For the intermediate color expression between Translucent and Enamel, apply Translucent Enamel. For discoloring expressions, apply Effect partially.



8. Final Light Curing

After final layering, light cure for about 180 sec. as a final light curing.

[Basic Build-Up Layering for Jacket Crown]

*Conventional curing time is indicated in the following steps.

In case, the LED CURE Master is used, please confirm "Light Curing Schedule" on page 9.

9. Corrections to Shape, Polishing and Complete

Correct the shape using a carborundum or diamond point.

After taking off jacket crown from plaster model, adjust the surface with a silicone point, and polish with brush, fables buff and polishing material to finish.

*Additional Layering

In the case of additional layering after corrections to shape, apply Repair Liquid thinly and apply needed body resin. Light cure for 60 sec., the same steps as 4-8.

Finally, sand-blast (about 0.1~0.2Mpa) the inside of the jacket crown using alumina powder (about 50 μ m), then use steam cleaner or ultrasonic cleaner to wash, and then dry.



Line Up

Regular Set, (Regular Set Hard)

Invisible Opaque 2.3mL :IvO	Enamel 5g (3mL) :E2, E3, E4
Opaque 2.3mL :OA1, OA2, OA3, OA3.5, OA4, OB2, OB3, OC3	(or E2 Hard, E3 Hard, E4 Hard)
Special Opaque Color 2.3mL :InO1, MO	Translucent 5g (3mL) :T (or T Hard)
Cervical 5g (3mL) :CA1, CA2, CB1, CC1	Primer Paste 2.3mL
Dentine 5g (3mL) :DA1, DA2, DA3, DA3.5, DA4, DB2, DB3, DC3	Repair Liquid 6mL
Opaque Dentine 5g (3mL) :ODA1, ODA2, ODA3, ODA3.5, ODA4	
Accessories :Flat brushes (3) ·Round Brushes (3) ·Mixing Paper (50) ·Pallets (5) with shade cover (1)	

Starter Set, (Starter Set Hard)

Invisible Opaque 2.3mL :IvO	Opaque Dentine 5g (3mL) :ODA2, ODA3, ODA3.5
Opaque 2.3mL :OA2, OA3, OA3.5	Enamel 5g (3mL) :E2, E3 (or E2 Hard, E3 Hard)
Opaque Specialty Color 2.3mL :InO1, MO	Translucent 5g (3mL) :T (or T Hard)
Cervical 5g (3mL) :CA1, CA2	Primer Paste 2.3mL
Dentine 5g (3mL) :DA2, DA3, DA3.5	Repair Liquid 6mL
Accessories :Flat brushes (3) ·Round Brushes (3) ·Mixing Paper (50) ·Pallets (5) with shade cover (1)	

Intro Set, (Intro Set Hard)

Invisible Opaque 2.3mL :IvO	Opaque Dentine 5g (3mL) :ODA3
Opaque 2.3mL :OA3	Enamel 5g (3mL) :E3 (or E3 Hard)
Opaque Specialty Color 2.3mL :InO1, MO	Translucent 5g (3mL) :T (or T Hard)
Cervical 5g (3mL) :CA1, CA2	Primer Paste 2.3mL
Dentine 5g (3mL) :DA3	Repair Liquid 6mL
Accessories :Flat brushes (2) ·Round Brushes (3)	

Stain Kit

Stain 1mL :Blue, Yellow, Red, Orange, Dark Orange, White, Black, Gray, Brown, A Shift, B Shift
 Stain Clear 6mL :Clear
 Accessories :Flat brushes (2) ·Mixing Paper (50) ·Pallets (5) with shade cover (1)

Red Plus Kit

Opaque 2.3mL :OA2R, OA3R, OA3.5R
 Cervical 5g (3mL) :CA1R, CA2R
 Dentine 5g (3mL) :DA2R, DA3R, DA3.5R

For any further information or questions, please feel free to contact us.



Yamamoto Precious Metal Co., Ltd.

Head Office: 3-7 Sanadayama-cho Tennoji-ku Osaka 543-0015, Japan

Branch Office: Tokyo, Osaka, Sendai, Nagoya, Fukuoka, JAPAN

Factory and R&D: Kochi, JAPAN

P: +81-6-6761-8338 F: +81-6-6761-0610

E: contact@yamakin-gold.co.jp

<http://www.yamakin-gold.co.jp>

ISO 9001/13485
 ISO 14001
 CERTIFIED



Scope:
 Headquarters and Kochi Plant



QAIC/JP/0455
 Scope: Kochi Plant

CE 0123