

Table: Suitable for Usage

Product name	Application						
	Precious Metals		Non-precious Metals				
	Au Alloy	Au-Ag-Pd Alloy	Ti	Ti Alloy	Ni-Cr Alloy	Co-Cr Alloy	Zirconia & Porcelain
Multi Primer PASTE	○	○	○	○	○	○	×
Multi Primer LIQUID	○	○	○	○	○	○	○

Product name	Application		
	Luna-Wing	TWINY	KZR-CAD HR 2
Multi Primer REPAIR LIQUID ONE	○	○	○

For Laboratory & CAD/CAM Use

### Multi Primer PASTE

Bonding Indirect Composite Resin to Metals



### Multi Primer LIQUID

Bonding Direct or Indirect Composite Resin to Metals and Ceramics (Zirconia)



### Multi Primer REPAIR LIQUID ONE

Bonding Indirect Composite Resin to Cured Hybrid Resin



Are you finding it difficult to choose the best primer?

# Multi Primer Multi Primer Series

### Multi Primer LIQUID

Bonding Direct or Indirect Composite Resin to Metals and Ceramics (Zirconia)



### iGOS-BOND

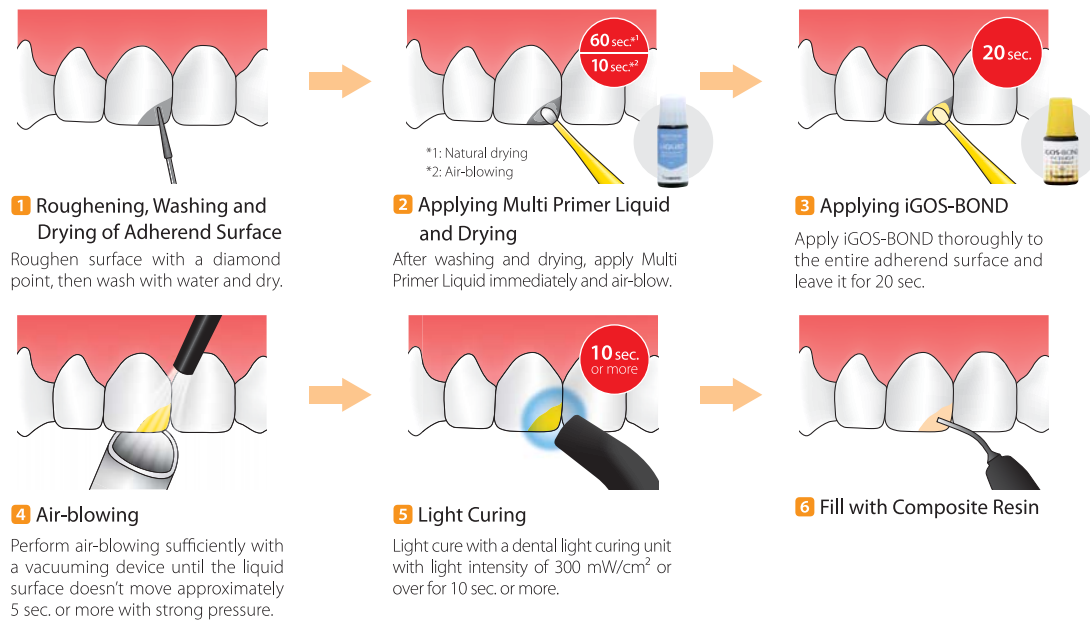
Bonding Direct Composite Resin to Dentine, Enamel or Direct Crown Restorations



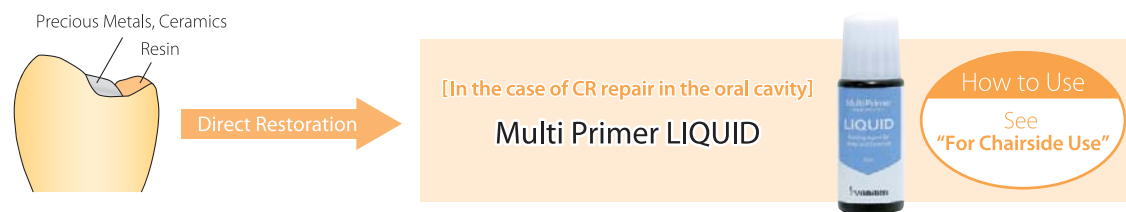
For Chairside Use

For Chairside Use  
DIRECT RESTORATION

Repairing fracture or wear of crown restorations made of alloys, zirconia ceramics, dental porcelain, or resin material containing inorganic fillers.



In the case of repairing fractured surfaces with mixed metal, ceramic and resin exposed.

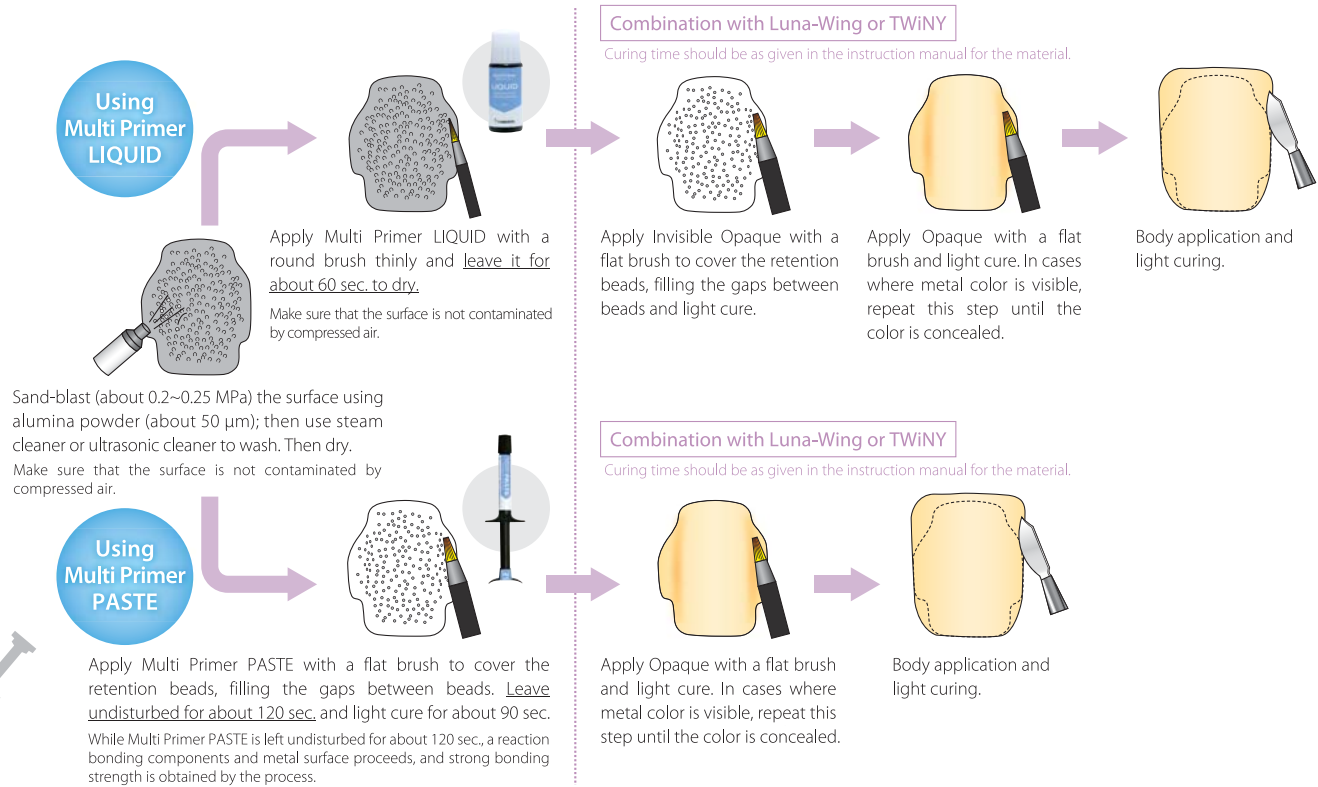


What is the solution for the case like this?

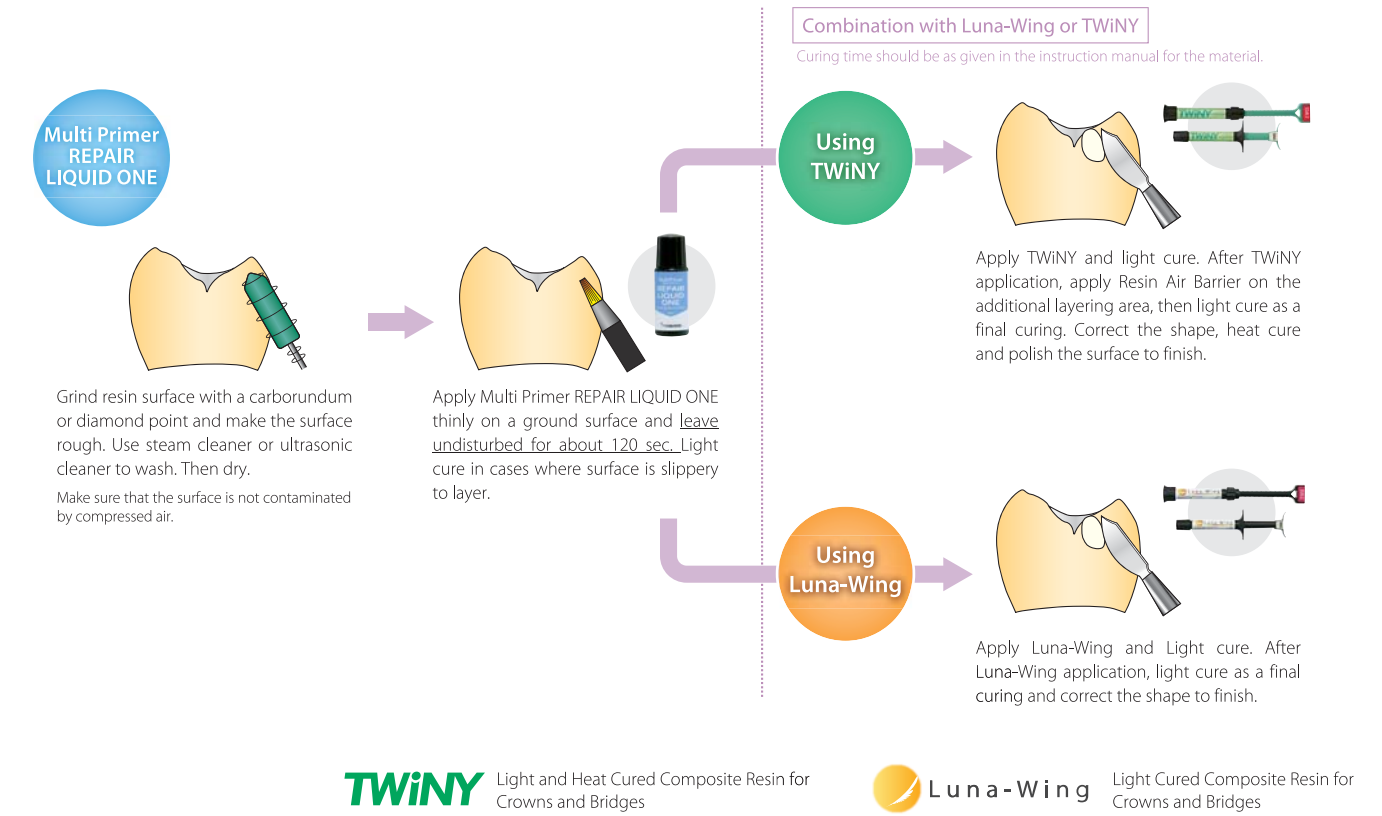


### In the case of application of resin on a cast metal framework

Metals for frameworks: Au alloy, Au-Ag-Pd alloy, Ti, Ti alloy, Ni-Cr alloy, Co-Cr alloy

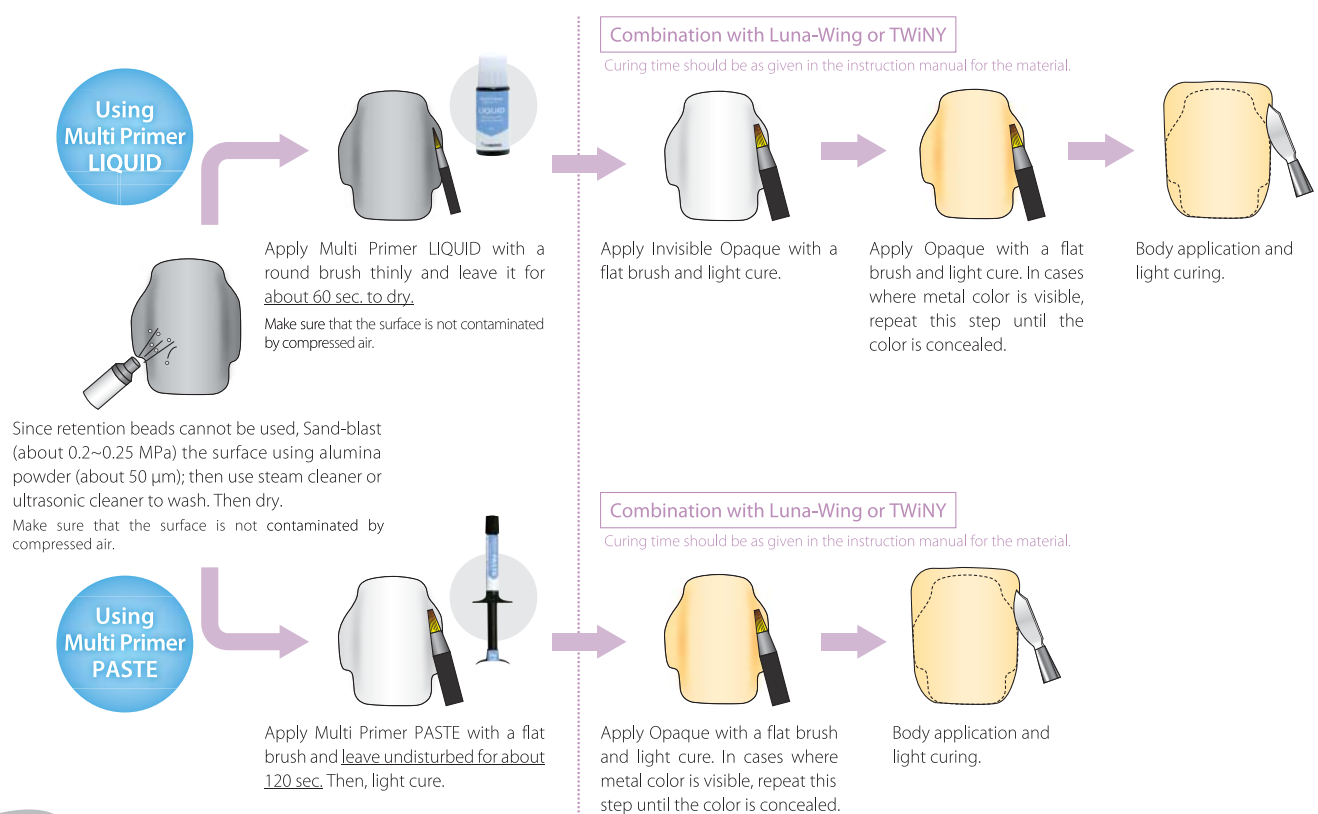


### Additional layering preparation after corrections to shape

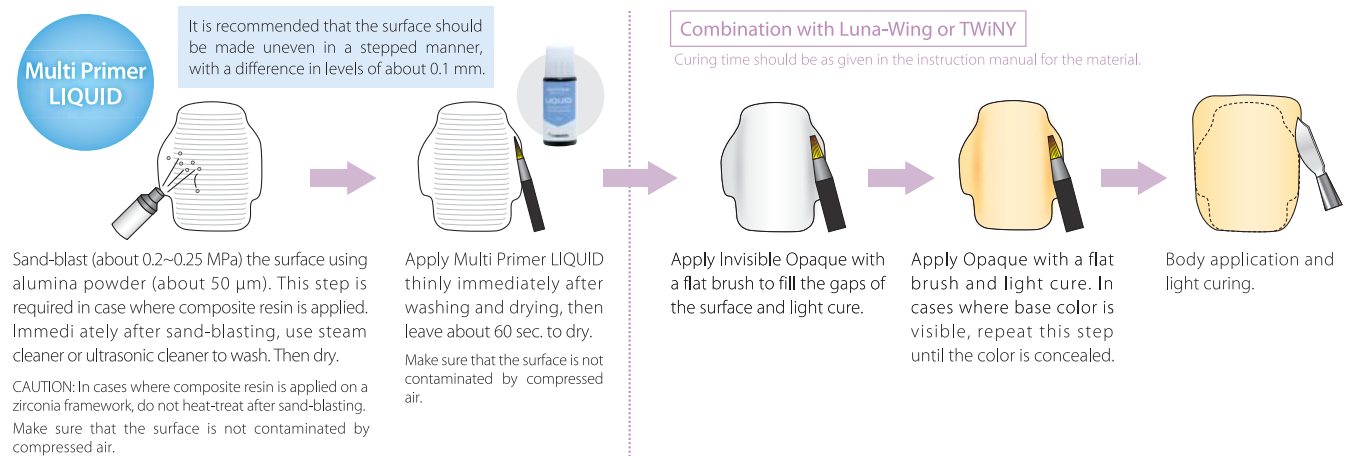


### In the case of application of resin on a CAD/CAM metal framework

Metals for CAD/CAM frameworks: Ti, Ti alloy, Co-Cr Alloy



### In the case of application of resin on a CAD/CAM Zirconia framework



### In the case of application of resin on a CAD/CAM resin framework

